

NEWS 131



June 2013

TTTG Inc.

www.tttg.org.au

NEWS 131 Contents

Contacts	3
The TTTG Home Base	9
2014 TTTG Tool Sale	35
2013 WWW Show	8
Committee Crisis	6
Meetings	3, 4
Workshops	5, 6,7 23,33
The Ledger	10, 11
JD's	18, 19
TTTG Tool Chests	16, 17,36
Stewart Handy Worker	12
Luther Honing Device	13
Ripsnorter	15
Shark Chisels	14
TTTG Workshop Project	20
Dreadnought Files	21
Flattening Oilstones	22
Farmer's Saw Horse	23
#5 ^{1/2} Planes	24, 25
Ranting & Raving	26
Plumb Bobs	27
Arcoy Dovetailer	28
Correspondence	29
Simmonds No-Set Saw	30
Websites	31
Review	32-34

Jim Davey Advert 25, 33

Cover pages

Safety Poster from Wartime London

The "new" TTTG Tool Chest

Next Meeting

The Tool Chest

The recently acquired nineteenth century Joiner's Tool Chest.

Tuesday June 11
Annie Wyatt Room

National Trust Centre

Observatory Hill Sydney



Entry \$5 'Doors open 7pm'

Auction

The June 11 meeting will conclude with the usual TTTG auction.

For this auction we have secured some quality user tools, there are certain to be **many bargains!**

The tools to be sold include many quality user tools.

TTTG Membership \$35

For only \$35 a year TTTG members receive a quality newsletter and a discount on workshop fees.

TTTG fees will remain at the current rate for at least another year.

TTTG Inc.

GENERAL MEETINGS

The general meetings are held at the National Trust Centre on Observatory Hill, Sydney.

This location is easy to reach by public transport. There is ample parking close to the meeting room.

Parking is free, safe and secure.

The general meetings are in the Annie Wyatt Room.

Refreshments are provided.

The entry fee is \$5.

TTTG Inc. Contacts

Postal Address

**The Traditional Tools Group Inc.
PO Box 314 Lindfield NSW**

Enquires

Mike Williams

02 9144 6356

Bob Crosbie

bobcrosbie@tttg.org.au

www.tttg.org.au

© Copyright 2013

Next Meeting

Tuesday June 11 **The Tool Chest**

Annie Wyatt Room

National Trust Centre Observatory Hill Sydney

Entry \$5

'Doors open at 7pm'

SELLING TOOLS

*In some circumstances TTTG sells tools for **members only**.
The selling fee is 20% commission on sales.*

DONATIONS

TTTG accepts donations of old tools.

BUYING TOOLS

TTTG will buy some old tools. Bulk lots given preference.

VALUATIONS

TTTG will not offer tool valuations under any circumstances.

Last Meeting

Hand Saws, 1660-1960

Tuesday April 9

The presenter discussed the technology of saw making and the various types of English saws developed over the previous two centuries. The evening's talk was illustrated with numerous old saws from a significant tool collection.

The saws on display were from the collection of Fred Murrell.

Most of Fred's rare tools have been acquired locally reflecting the rich technological heritage of Australia.

TTTG Tool Collection

Tool Chest

TTTG has recently acquired a nineteenth century Tool Chest.

This is a fully fitted Tool Chest. The inside lid, tills and drawers are veneered with mahogany.

The Tool Chest is British Isles, middle nineteenth century.

TTTG has several Tool Chests. They include two made in the NSW Government Railway workshops in the between the wars years.

One is a fitted Tool Chest made in the 1930's. The other is a Pattern Maker's box, with many of the original tools, made in the 1920s.

TTTG also has a fitted Joiner's Tool Chest made in the mid nineteenth century. This Tool Chest has trays.

Next Meeting

Tuesday June 11

The Tool Chest

At the 2013 Annual TTTG Tool Sale the TTTG Committee purchased a nineteenth century English Tool Chest.

This Joiner's Tool Chest will be on display and can be examined by the audience under the supervision of the Committee.

There will be a talk on the history and construction of high quality elaborate Joiner's Tool Chests.

Auction

An auction of tools and associated ironmongery concludes the evening.



Proposed Publication

The TTTG Tool Chests

The recently acquired TTTG Tool Chest is "world class". The other TTTG Tool Boxes are significant artefacts. The TTTG Committee plans to publish drawings, photographs and analysis of the TTTG Tool Chests.

When TTTG secures a "home base" the tool chests and Tool Collection will conserved and displayed

The TTTG Tool Chest will be on display at the 2013 Sydney WWW Show.

TTTG 2013 Workshops

One day skills centred, “hands on” and affordable workshops have been offered for over a decade by The Traditional Tools Group.

Participants at TTTG workshops are required to wear sensible clothing and footwear. Refreshments are provided.

Workshop Venues

-28 Pomeroy Road
Strathfield
-*Sydney Heritage Fleet*
Heritage Shipyard
Gate number 4
James Craig Road Rozelle
Bring your lunch Wear safe shoes
Workshops start at 9.15am

How Much?

Members \$20
Others \$40

Join at workshop for \$55*

Workshop Presenters

Wood Joints & Planes

Bob Crosbie will demonstrate the techniques of making wood joints.
Jim Davey and Bob Crosbie will demonstrate plane tuning and use.

The Planes Workshops

18 August	<i>Sharpening</i>
15 September	<i>Planes: Basic</i>
20 October	<i>Planes: Special</i>
3 November	<i>Planes: Advanced</i>

Workshops to develop skills

TTTG Workshops

What you get

Value for money

TTTG workshops are great value for money. *There is no need to argue this point, just find the cost of other workshops.*

Great selection

Some of the TTTG workshops are unique. Try and find another one day workshop on Blacksmithing or Saw Sharpening.

Great teaching

Cost aside the teaching at TTTG Workshops is second to none.

Great side benefits

Apart from good tea, coffee and a selection of biscuits attending a TTTG Workshop has side benefits.

Tools for Sale

At every TTTG Workshop there are tools on sale. Both old and new tools are offered at excellent prices.

Some quality tools are now available

The Workshops are “hands on” and apart from developing skills you also get to meet other members.

Great entertainment

The TTTG Workshops are never boring. The teachers know what they are doing and the participants are motivated, so everyone can relax and share a few experiences.

The NEXT WORKSHOP

Wood Joints

23 June 2013

Cutting precision wood joints

Saw Sharpening

4 August 2013

Filing and setting handsaws

Venue: 28 Pomeroy Street. Strathfield

Bring your lunch and wear safe shoes. Workshops start at 9.15am

TTTG COMMITTEE CRISIS

The TTTG Committee has a problem

Some committee members have served for many years.

Some committee members have too many responsibilities.

More TTTG members need to step forward and become actively involved in the management of TTTG.

The crisis areas are:

The Treasurer

Clynt has been TTTG Treasurer for sixteen years.

Recently he has taken on more roles.

Clynt needs an assistant Treasurer to reduce his stress.

Promoting TTTG

TTTG has a track record of success!

The 2013 TTTG Tool Sale has restored public confidence.

The workshops are popular and highly respected.

NEWS is a quality publication.

Despite these achievements TTTG does not have a profile in Museums or Historical Associations.

A campaign to promote TTTG should be launched

TTTG Planes Workshops

After the Sydney WWW Show the TTTG Planes workshops return.

Jim Davey and Bob Crosbie will conduct a series of workshops designed to develop planing skills.

Sharpening Edge Tools

Sunday 18 August 2013

Sharpening planes and chisels

Grinding and honing techniques

Oil and Water stones

Ceramic and Diamond plates

Freehand sharpening

Sharpening devices

Jim Davey and Bob Crosbie

Plane Tuning I Basic

Sunday 15 September 2013

The mechanics of planes

Truing plane soles

Preparing plane blades

Setting and using planes

Jim Davey and Bob Crosbie

Jim Davey merchandise

Jim always brings a selection of his stock to the TTTG Workshops.

This is tailored to the workshop.

A great chance to try and buy

Special Purpose Planes

Sunday 20 October 2013

Ploughs and Combination planes

Shoulder and Rebate planes

Compass planes and Shaves

Wooden and Metal planes

How to use special purpose planes

Bob Crosbie

Plane Tuning II Advanced

Sunday 3 November 2013

Consolidates Plane Tuning 1 Basic

Edge joints

End grain

Advanced techniques

Jim Davey and Bob Crosbie

The TTTG Planes Workshops have developed a reputation for being the best “skills based” workshops offered in Sydney. These workshops are always well attended. *A TTTG workshop and practice will improve skills.*

Jim Davey offers a selection of quality tools and sharpening equipment at every workshop he presents. *The best quality tools at the best prices.*

Venue: 28 Pomeroy Street Strathfield **Cost: \$40** (\$20 for Members)

Participants will need to wear suitable footwear and bring your lunch.

Light refreshments, tea, coffee and biscuits, are provided.

2013 Sydney Timber and Working With Wood Show

When:

Friday

26 July, 10:00am–5:00pm

Saturday

27 July, 10:00am–5:00pm

Sunday

28 July, 10:00am–5:00pm

Where:

Sydney Olympic Park, 8
Australia Avenue, Sydney

TTTG will be there!

TTTG was an exhibitor at the first Sydney Timber and Working With Wood Show and we haven't missed any of the Sydney Wood Shows.

The TTTG Demonstrations

There will be demonstrations of traditional woodworking skills.

- Timber Preparation
- Joint Cutting
- Special planes
- Shaped work
- Saw Sharpening
- Drawknives

Old Tools for Sale

Over the years an attraction of the TTTG Stand has been the quality and reasonable price of the many old tools offered to the public.

2013 will continue the opportunity to purchase quality old tools from reputable and friendly vendors.

Jim Davey

Jim will be at his corner of the TTTG Stand demonstrating plane tuning and sharpening.

Fully fettled old planes and new tools and sharpening equipment will be available at the best prices.

See Jim's website for details.

The TTTG Exhibit

The centre piece will be the recently acquired nineteenth century Joiner's Tool Chest.

A wide selection of rare and unusual tools will be on display.

Volunteers Wanted

The demonstrations have been organised. The three days are planned.

TTTG needs help with:



Transport

Setting up and Packing Up

Talking to the Public

The TTTG Home Base

The State of Play

TTTG is communicating with two local Councils regarding redundant council properties.

The Formal Process

Expressions of interest have been called for the use of a wound-up Bowling Club (East Denistone) by Ryde City Council. TTTG contacted the Council and in due course has submitted the first documentation to support our interest in the site.

The second phase of the process is in a month's time. Following the submission communication from Council has been minimal.

There appears to be little interest in the East Denistone Bowling Club site and TTTG seems to fit well the requirements of Council. The old club house offers excellent security and would be ideal for the storage of the TTTG Library and Tool Collection as well as suitable for a workshop and for teaching.

The Committee can only wait!

The Informal Process

TTTG has discussed a suitable site with a representative of Mensheds Australia. The independent opinion is that TTTG would be a suitable tenant and fully meet the Council requirements for this site.

The redundant Council property is the Homebush Sports Club.

TTTG has approached Strathfield Council regarding the Homebush Sports Club site. Council requires any tenant to manage the building and make it available for use by community organisations. TTTG has the structure and governance to fulfil these requirements.

Strathfield Council has informed TTTG expressions of interest will be called for the use of Homebush Sports Club sometime in 2013.

Council will not agree to inform TTTG when expressions of interest will be declared and advertised.

Again The Committee can only wait!

The TTTG is vigilant in the quest for a home base for TTTG.

A TTTG Home Base

The proliferation of Men's Sheds in Sydney reflects the number of suitable sites that cannot be redeveloped or converted to commercial usage.

The Demographics

The ideal site for a TTTG Home Base would be between Homebush and Hornsby along the main Northern train line.

If you have ideas or contacts make them known to the Committee.

THE LEDGER

New Members

On behalf of the TTTG Executive and Members, a welcome is extended to twelve new members:-

The Australian Woodworker	M675
Australian Woodsmith	M676
Australian Wood Review	M677
Peter Long	M678
Stephen Conwell	M679
Connie McCulloch	M680
James Galletly	M681
Craig Hubbard	M682
Arthur Thomas	M683
Warwick Swain	M684
Scott Murphy	M685
Amanda L'Estrelle	M686

We hope you find your membership rewarding and look forward to your participation in our activities.

Next Year's TTTG Tool Sale

Following the great success of our 2013 tool sale at the Brickpit Sports stadium, Thornleigh, TTTG has again booked this venue for our 2014 Tool Sale. It's on Sunday 23rd February, 2014 (the last Sunday before the commencement of the Brickpit's basketball season) from 9am to 1pm. It's an indoor venue with parking underneath; so even if we have the deluge that preceded the 2013 sale, you need not get wet.

Because of trader satisfaction from the 2013 sale, several traders have already booked tables for the 2014 sale (hire remains at \$40 per table and customer entry \$5 per head with free entry for disinterested spouses and accompanied children).

If you'd like to book one or more tables, please let me know on (02) 9416 7134 or treasurer@tttg.org.au

TTTG Aprons

I'll be bringing our TTTG aprons to future meetings and workshops. The aprons are very well made of strong material and sell for only \$25 each. It's best to get them from me in person as the cost (including packaging) by registered mail is \$36.20 each. These dark green aprons are tastefully embroidered:

**THE
TRADITIONAL
TOOLS
GROUP**

2013-2014 TTTG MEMBERSHIP SUBSCRIPTIONS ARE NOW DUE

Please pay your 2013-2014 subs before the 30th June, 2013. See Membership Renewal notice in this issue of TTTG News. This notice also lists the proactive members who have already paid their subs.

TTTG's Postal Address

As you're probably aware, TTTG's postal address is now

TTTG Inc
PO Box 314 Lindfield NSW 2070

Our old Grosvenor Place post office box (which we kept open during a long transition period) is now closed; so any mail sent to Grosvenor Place will be "Returned To Sender".

Clynt Sheehy
TTTG Treasurer



THE TRADITIONAL TOOLS GROUP INC.

SUBSCRIPTION RENEWAL NOTICE

TTTG Memberships are based on the financial year 1st July to 30th June

**PLEASE PAY YOUR 2013-14 SUBSCRIPTION BEFORE 30th JUNE, 2013
PLEASE FORWARD A CHEQUE FOR *\$35
(MADE OUT TO TTTG INC.) TO:**

**TTTG Inc.
PO Box 314
LINDFIELD NSW 2070**

Or you may pay your subscription on-line via PayPal (see www.tttg.org.au)

* If you live in Australia more than 50 km from the GPO Sydney or you are an Australian CentreLink pensioner, then you MAY CHOOSE TO PAY only \$30

Please advise if you have CHANGED your address from that shown on the address label on the envelope which conveys your TTTG NEWS or if you have changed your E-mail address.

It would be helpful if you would write your name and TTTG Membership number on the back of your cheque, particularly if the name on your cheque differs from yours. (See top left of TTTG NEWS address label for your Membership Number.)

Should you require a receipt, please enclose **a stamped self addressed envelope** with your cheque or see the Hon. Treasurer, Clynt Sheehy, at a TTTG meeting.

The Treasurer has already received 2013-14 subscription payments from the following prompt-paying, proactive members (as at 26th May, 2013) :

**2, 12, 15, 16, 21, 23, 31, 32, 43, 49, 53, 60, 113, 116, 136, 159, 165, 186,
190, 196, 234, 238, 240, 241, 248, 278, 253, 276, 302, 321, 344, 350, 374,
375, 378, 396, 411, 414, 416, 426, 461, 463, 479, 484, 489, 500, 502, 505,
510, 512, 516, 517, 518, 519, 524, 549, 557, 568, 569, 570, 580, 582, 601,
634, 638, 639, 655, 666, 668, 674, 678, 679, 680, 681, 682. 683, 684, 685,
686 et seq.**

These Members and those who have posted cheques should ignore this notice.

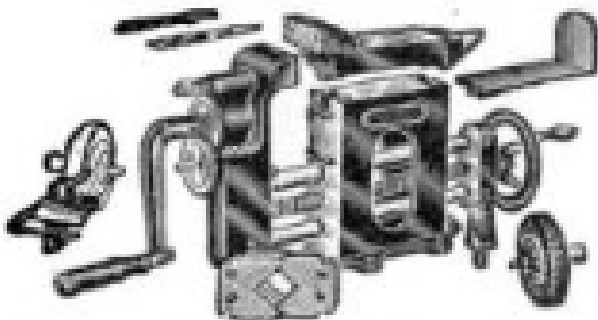
The Stewart Handy Worker

The Stewart Handy Worker has featured previously in *NEWS*.

Popular Mechanics June 1916

A Wonderful Combined Tool

is this **STEWART HANDY WORKER**



It combines: A strong and powerful vise, steel faced; a steel pipe vise for up to 1½-inch pipe; big, sturdy anvil; cutting hardie; corundum grinding wheel 5" x 1", 2 speed drill press; 3 speeds, direct, 4 to 1 and 16 to 1.

Weights, boxed, 90 pounds; price f. o. b. Chicago, \$12.50

Send \$2.00 and pay balance when outfit arrives. All money back if not highly pleased. It's a marvelously valuable outfit. Write for circular.

Chicago Flexible Shaft Co.

A617 N. La Salle St.

CHICAGO

Strange Tools

The TTTG editor is looking for examples of unusual looking tools. This type of tool gets these responses;

What is it?

What does it do?

How is it used?

The Editor believes readers would be interested in the answers! A strange tool will be selected, identified and put to use.

TTTG wants your nominations!

bobcrosbie@tttg.org.au

Luther Honing Device

This advertisement first appeared

New Patented Honing Device—A Wonderful

Honing Device
No. 74



Invention With this new Luther device an inexperienced workman can give chisels and plane bits an absolutely even bevel. Prevents possibility of mistakes—cuts off all jiggling motions, but allows the free circular movement that means perfect honing. Keeps tool on hone at a true and perfect angle and permits you to give any desired bevel to the sharpening edge. Sent prepaid for \$2.

SIX MONTHS' FREE TRIAL

To avoid all risk on your part, we will refund price of grinder or honing device any time within 6 months if not satisfied. Circular and details of Six Months' Trial Offer sent free on request. In writing give us your dealer's name.

LUTHER GRINDER MFG. CO. 60 Point Street MILWAUKEE, WIS.

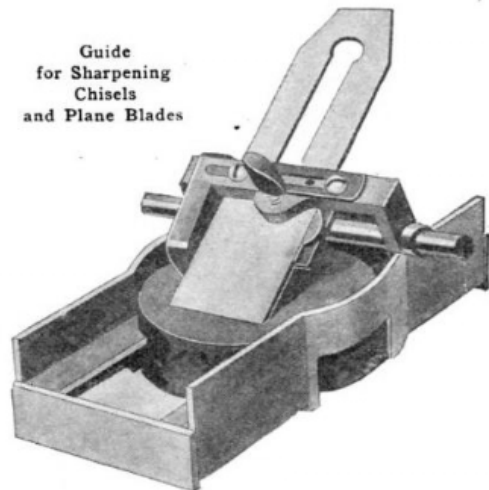
in Popular Mechanics January 1915. The Luther Honing Device was reviewed in May 1915.

to cut through. The new guide is designed with a metal holder for the sharpening stone, and an adjustable angular mounting for the blade, or bit,

TOOL-SHARPENING DEVICE FOR WOODWORKERS

For the use of carpenters, and other woodworkers, an instrument has been devised which makes it possible when sharpening a tool, such as a chisel or plane blade, to hold its cutting edge firmly against the surface of a sharpening stone at any angle desired while moving it with a rotary motion. To do this by hand without the aid of a guide is a difficult operation which frequently results in the rounding of an edge, giving the bit later a tendency to "ride" on the surface, it is supposed

Guide
for Sharpening
Chisels
and Plane Blades



enabling an angle to be maintained throughout the whole sharpening process.

Circular Oilstones

A circular oilstone was advertised in Popular Mechanics January 1913. The standard oilstone shape was rectangular. Sales of the new circular oilstone must have been significant for Luther Grinder Mfg. Co. to manufacture a honing device specifically for the new circular oilstone. Was The Luther Honing Device the great grandfather of honing jigs? The turntable design would insure maximum blade to stone contact. *Have any examples of The Luther Honing Device survived?*

Shark Chisels

By the 1960s Shark brand chisels were tool icons in Sydney.

Sharks or Bergs were considered to be the best chisels available. Berg chisels were available in every tool shop, even in the numerous local suburban hardware stores.

I cannot recall any rivals to Bergs' reputation for being the best. There were critics of Berg chisels who argued they were too hard and a little brittle for general use.

The nearest in quality to the Berg chisels were Titan Chisels. Titan chisel were close copies of Bergs and made from best BHP Steel.

The Berg look a likes were Toledo chisels. Toledo chisels were made in Sweden, probably in the same factory as Berg chisels. They lacked the finish and edge holding quality of Berg chisels.

There were lots of other chisels around in the 1960's, including Stanley USA. The UK chisels with the best name were Marples. Old pre War chisels were also common and names like Ward & Payne were held in high regard.

Berg becomes a Tool Icon

Berg chisels developed a name for consistent quality in the immediate two decades after World War 2. Tools from the USA and the UK were in limited supply.

The post War situation

Tool production in the USA and the UK couldn't keep up with local demand throughout the 1950s. In Sweden the pre-war infrastructure was intact and the pre-war export markets were tool hungry.

Berg chisels and Sandvik saws were available in Sydney in the 1920s. Tradesmen and builders had a choice; wait for a Disston saw or a Marples chisel to be in stock or try a Sandvik or Berg.

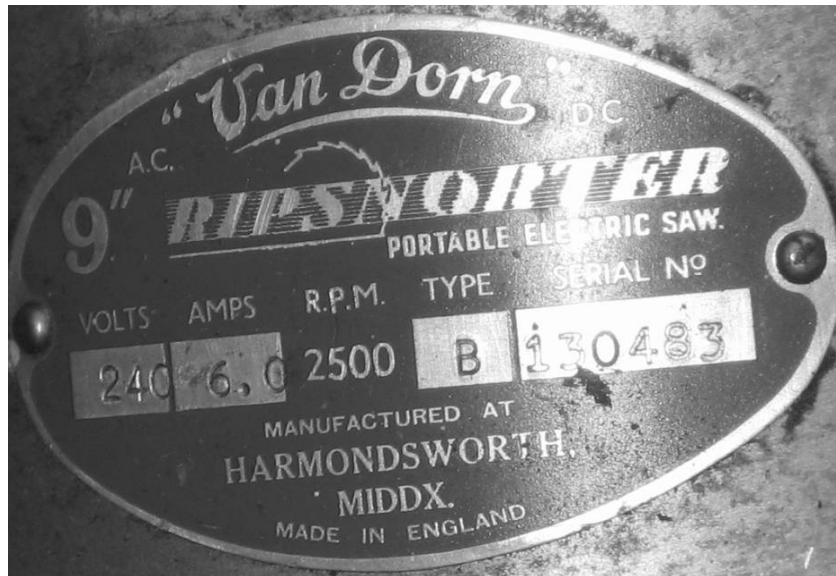
Berg Chisels stamped T A Aitken Sydney are recorded. This Sydney Tool Dealer probably imported tools from Sweden in the 1920s. McPhersons stocked Berg chisels immediately after World War 2. Berg chisels were known to be good chisels and were available.

How good are Berg chisels?

Berg made various patterns of chisels. The bevel edged chisels are the most common. Both tang and socket Berg chisels were available. All Berg chisels were well made and well balanced tools capable of holding a fine edge. The bevel edge Bergs are thicker than the best UK bevel edged chisels. Bergs are hard to beat for joinery and site work.

For the last few months I've had three 25mm chisels on my bench. I wanted to compare the chisels and to see if one became my favourite. The chisels are Berg, Titan and Mathieson. The Titan is the longest chisel but I use the chisels equally.

**Ripsnorter
Portable Power Saw**



This power saw was donated to TTTG at the 2013 TTTG Tool Sale. *The saw is in the Tool Collection.*

Ripsnorter was made in the UK, probably 1960s, by a subsidiary of Black and Decker (USA).

The editor found an advert for the Ripsnorter in the USA in 1940. *Popular Mechanics March 1940.*

The first Ripsnorter was patented in the UK in 1928. Is any reader familiar with this power saw?

Tool Chest

Bob Crosbie

The Traditional Tools Group had a lot at skate at 2013 Tool Sale. The Committee started setting up the sale at 7am. The weather didn't look good, would anyone come? Stress levels were high.

Around 7.15am I was approached with a question "do you want to see the Tool Chest?" I knew this was probably related to a phone conversation a few days ago. The Tool Chest sounded interesting.

When the lid was opened I asked "how much?" The seller wanted the Tool Chest to go to TTTG but he also wanted a fair price. This was the time to make a quick decision.

My appraisal of the Tool Chest was confirmed by the other Committee members present. My decision was "TTTG will buy the Tool Chest".

The decision to acquire the Tool Chest was not without criticism.

The other TTTG Tool Chests

TTTG has several Tool Chests:

-NSW Government Railways box made in the Clyde workshops in the 1920's. Such Tool Chests were made up to the 1950s in the railway workshops by apprentices.

-A Pattern Maker's box made in 1927 in the NSW Railways Pattern Shop Redfern. This box contains a kit of Pattern Maker's tools.

-A Carpenter/Joiner's Tool Chest with trays. This is a nineteenth century box requiring extensive repairs. I saved this from going to landfill as it is a rare example of a plain journeyman's tool chest.

-A Joiner/Cabinet Maker's fitted Tool Chest. This is the Tool Chest acquired at the 2013 Tool Sale. The Tool Chest was made in the British Isles in the second half of the nineteenth century.

Woodworkers' Tool Chests

Fitted Tool Chests were used by "bench" woodworkers, such as joiners, cabinet makers, pattern makers and coach makers. They were made by apprentices to demonstrate trade skills. A cabinet maker's chest was fitted with sliding tills containing veneered drawers. The lid was also veneered. A coach maker's chest was fitted with sliding trays with lid "coach" painted.

A number of Woodworkers' Tool Chests have survived. Drawings of several UK and USA Tool Chests have been published.

TTTG will eventually publish drawings of the TTTG Tool Chests.

The Tool Chest acquired at the Tool Sale will be fitted out with old tools.



From the outside these Tool Chests look like a sea chest. The outside is always painted and the surface shows lots of knocks and bruises. The function of the Tool Chest is to store and transport tools.

Open the lid and a formal interior is revealed. The lift-out tills are fitted with dovetailed and veneered drawers. The inside of the lid is veneered and cross banded. If only the tools were still in the box.



JD's

John Daniel

A Saddler's Nest

Over the years I've visited many workshops, sheds, and improvised work spaces, back verandahs, even under a sheet of corrugated iron under a Gum Tree. Seldom do I see a workshop that is an extension of the tradesman who works there, a total package, this third generation Saddler and his Saddlery.



A glimpse inside the workshop

I was privileged to be welcomed into his domain, and especially privileged to hear him speak of his experiences, the provenance of his tools and equipment and to be able to browse at my leisure through his workshop, and especially able to handle, photograph and investigate areas of special interest (I was constantly reminded of the sharpness of his knives).

What a feast for the senses, the smell of leather, the ordered clutter of tools and the cushioned sounds of the hand tools in use answers the unasked question, "what led this man into this trade"?

Even so I did have to ask, *was the trade in his blood?*



Specialist tools on the bench

After the first scan around of the busy corners, the tool boards on the walls and the tools on the bench nestled in the leather offcuts I started to focus on specialist tools associated with saddle making, many I hadn't seen before, perhaps just *mystery* tools at a market. Hand tools such as Pricking wheels, Lignum Vitae Collar maker's mallets, Saddlers knives, Stuffing regulators, Plough gauges (strap cutters), a Lignum Vitae Ponky being demonstrated, Saddler's Clams, Salter Buckle scales (weigh one buckle to calculate the number in a gross).



A Ponky in use



I must go on. A whale bone leather shave was in good company with a Walrus tusk fid and a Horn handled pricking wheel with a variety of wheels stored in its handle; these tools had great sentimental value as they had belonged to the man's uncle. Little wonder a six year old boy was inspired to become a saddler like his father, spending his youth looking over the shoulders of a saddle making family. A dream well fulfilled.

No power tools evident however there were a few man powered mechanical devices such as multiple strap cutters, leather splitters, Skiber (for tapering the end of a strap), a staple making machine, a Rounding tool (for whip handles); I must stop here though not before mentioned the British United Shoe Machinery Co. Ltd. Treadle sewing machine still in use and a Cylindrical bed sewing machine and a Bobbin winder.



As I began, this Saddlery was a feast for the senses and this short report doesn't do it justice, I can only hope that a few of the photos taken will help me out. I was indeed privileged to have been given a glance into this man's place of work, even though he called it his place of relaxation.



Workshop Project

Marking Gauge

Bob Crosbie

A project at the last TTTG workshop *Setting Out Tools* was this marking gauge. Everyone who tries this gauge has this reaction, 'the gauge is so easy to use'. *It is also easy to make.*

Sizes aren't critical; the stock is about 70mm x 60x 20mm, the stem about 150mm x 16mm diameter, wedge about 50mm x 12mm x 6mm. The gauge in the photo was made from Forest Oak; the ones at the workshop were made from Jarrah. The pin can be made from silver steel.



Start by planing the wood to size. Begin with the stock. Mark out and drill the 16mm hole for the stem. Mark out and chisel the mortise for the wedge. *Shape the stock to suit your taste.* The shape in the photo fits the hand perfectly. Round the stem to a push fit in the hole. *You don't need a lathe!* Mark out an octagon and plane off the corners the facets until you have a perfect fit. Plane a flat for the wedge and make and fit the wedge and fit the pin. Sharpen the pin first.

Dreadnought File

FILE WITH CIRCULAR TEETH

A new style of file comes from London, for which several good things are claimed. From the accompanying cut



Courtesy Machinery

The New File

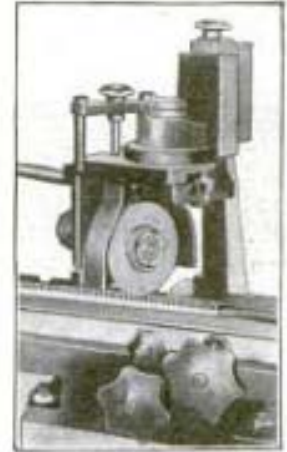
it looks reasonable that this file should be self-cleaning, the chips being pushed continually toward the outer edge. The grooves are so deep that they cut without slipping and last longer without sharpening, which can be done much below the usual cost because of the simple shape of the teeth. It is claimed to work well on all metals and even marble.

Popular Mechanics June 1907

A FILE THAT CAN BE RESHARPENED

The discovery that the milled curved-tooth file, which has come into quite general use since its invention in 1900,

can be resharpened as easily as a milling cutter is considered an advance in shop practice greater than the invention of the file itself. The fact that in the making of the curved-tooth file each tooth is cut and milled separately suggested a method of resharpening similar to the original cutting, and a machine has been devised for the purpose. This file-sharpening machine consists of a small fine-grinding wheel which operates in an adjustable arc to conform to the curve of the teeth. The file to be sharpened is fed through the machine by a small hand wheel in front, and the grinding wheel is passed through each tooth in turn by means of a guide lever attached to the wheel mounting. Resharpening will increase the life of a file considerably.



Popular Mechanics January 1914

Old Files

Many types of files are no longer made. Some of these files are invariable. The dreadnought is one example of a useful but no longer made file.

Old files and rasps can be resharpened by immersion in acid. The safest acids to use are Citric Acid or Cleaning Vinegar.

Oilstone Myths

Myths about oilstones abound, from the illogical "oilstones don't sharpen but polish an edge" to the delusional "sand on concrete will flatten oilstones". The method from Popular Mechanics July 1906 is good but a better method is to use a worn diamond plate.

Oilstone and Diamond Plate lubricants

The best lubricant for oilstones and diamond planes is White Spirit.

Flattening Oilstones

HOW TO LEVEL AN OILSTONE

For use in properly truing up oilstones provide a block of cast iron 1½ in. thick, 9 in. wide and 12 in. long, with a projecting ledge ½ in. wide and ½ in. high on one side, this to keep the block from slipping when on the bench. Plane the block up true on both sides and the three edges, says the Patternmaker, and place on the bench convenient to sink water; also provide coarse and fine emery powder.

To true up an oilstone or slip, place a small quantity of the coarse emery powder in the middle of the block, pour on a little water and rub the oilstone back and forth until its surface is level; then repeat the operation, using fine emery powder with water. To true the round side of a stone, and preserve its original radius, turn the stone while rubbing.

This method will entirely remove all the glaze, so objectionable in oilstones, and leave a nice surface similar to that obtained by grinding.



Coarse Diamond Plate

Oilstones can be rapidly flattened using a diamond plate and white spirit as a lubricant.

Using abrasive paste with a lubricant on a cast iron plate or flat glass plate will also rapidly flatten any oilstone.

Rubbing an oilstone on concrete using water and sand is a good way to develop back injuries!

Soaking oilstones in thinners will remove old dried oil.

Popular Mechanics July 1906

Sharpening Edge Tools

Oil stones? Water stones? Diamond plates? Ceramics?

The truth is all these sharpening abrasives produce a satisfactory edge.

The real *secret* to sharpening edge tools is:

Correct Technique

TTTG teaches tool sharpening technique

To improve your sharpening technique attend the ***Planes Workshops***

18 August ***Sharpening***

15 September ***Basic Planes***

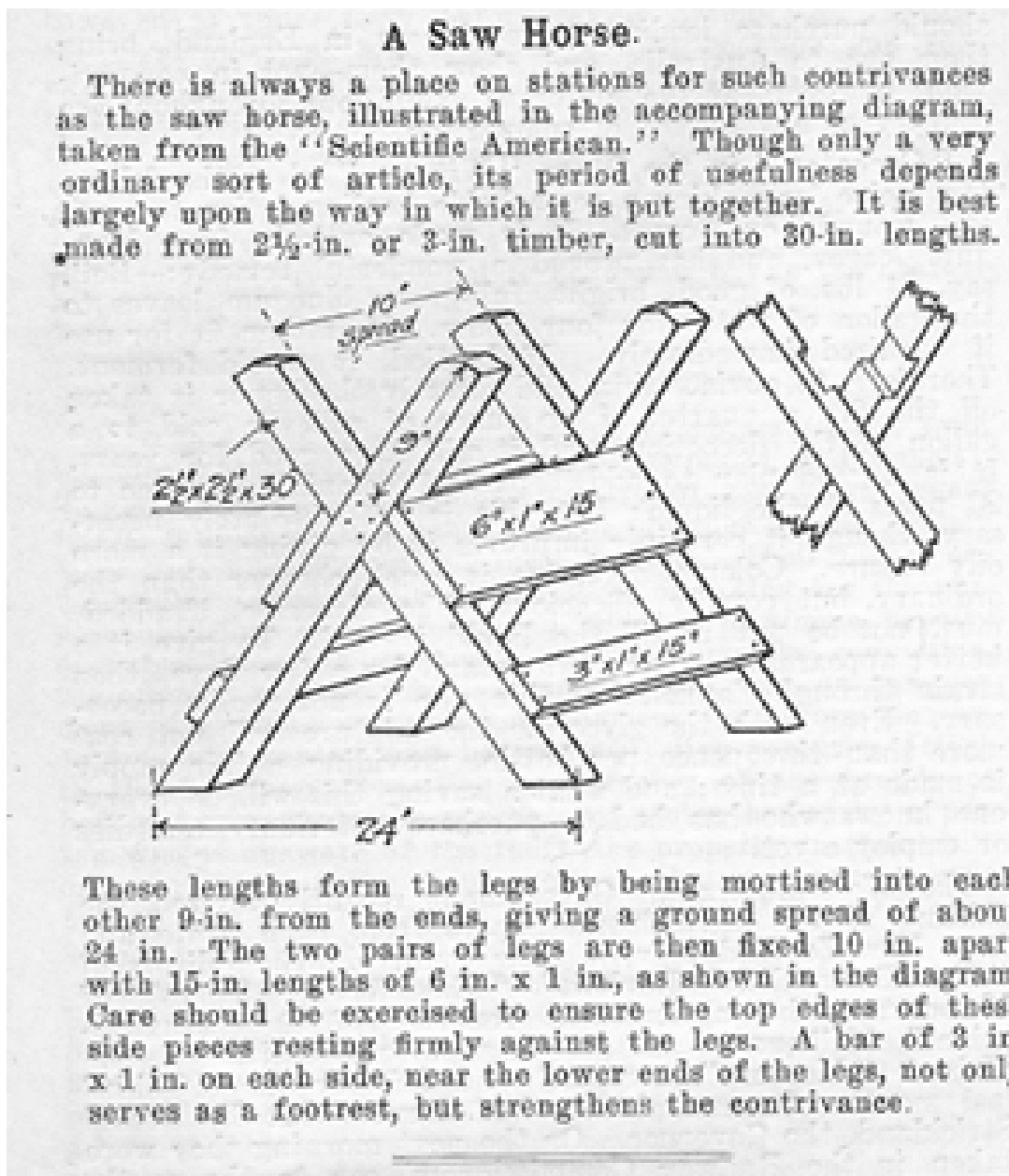
20 October ***Special Planes***

3 November ***Advanced Planes***

For details go to www.tttg.org.au

Farmer's Saw Horse

Andrew O'Connor sent in this 1930's advertisement from The Pastoralist's Review.



Saw Sharpening workshop

TTTG offers at least one Saw Sharpening each year.

TTTG gave in to popular demand and offered two last year.

These workshops are well attended. Booking recommended.

Next Saw Sharpening workshop 4 August 2013

The Stanley 5^{1/2} Plane

The 5^{1/2} plane can be one of my favourite planes or it can be one of my least liked planes; it all depends on the plane's date of manufacture.

There are two versions of the Stanley 5^{1/2} plane.

The pre War Stanley 5^{1/2} plane

This is one of my favourite planes. The plane's length and blade width result in a well-balanced plane.

The blade is 2^{1/4} inches wide.

The post War Stanley 5^{1/2} plane

This plane feels heavy and out of balance. The blade is wider than the pre War version. The increase in blade width has resulted in a heavier plane body.

The blade is 2^{3/8} inches wide.

The Stanley 27^{1/2} plane

This transitional plane is the wood bodied equivalent of the cast iron Stanley 5^{1/2} plane. The 27^{1/2} plane is a well-balanced plane.

The blade is 2^{1/4} inches wide.

The Bed Rock 605^{1/2} plane

Production of the Bed Rock planes was discontinued during the war. The plane's length and blade width result in a well-balanced plane.

The blade is 2^{1/4} inches wide.

Stanley Made in USA & Stanley Made in Canada

By the 1920s Stanley made planes in the USA and in Canada.

Stanley Great Britain

By the 1930s Stanley also made planes in the United Kingdom.

Copies of the Stanley 5^{1/2} plane

In the United Kingdom in the 1930s Record made planes identical to the Stanley range.

In the 1940s Pope in Australia made a series of planes based on Stanley planes.

In the 1960s Turner in Australia made a range of planes closely copied from Stanley planes.

In post war years Carter in Sydney made metal planes loosely based on Stanley prototypes.

The pre War Record 5^{1/2} plane

Quality is equal to Stanley USA.
The blade is 2^{1/4} inches wide.

The pre War Stanley Great Britain 5^{1/2} plane

Quality is equal to Stanley USA.
The blade is 2^{1/4} inches wide.

The post War Record and Stanley 5^{1/2} plane

The blade is 2^{3/8} inches wide.

Pope 5^{1/2} plane

The blade is 2^{3/8} inches wide.

Pope/Falcon 5^{1/2} plane

The blade is 2^{3/8} inches wide.

The Turner 5^{1/2} plane

The blade is 2^{3/8} inches wide.

The Carter 5^{1/2} plane

Carter promoted the 5^{1/2} as an ideal plane for all general work. The advertising addresses the potential buyer with limited cash.

The blade is 2^{3/8} inches wide.

Other 5^{1/2} planes

Other metal plane manufacturers made copies of the Stanley 5^{1/2}.

Marples and Rapier?

The editor is interested in information on 5^{1/2} planes.

Scare 5^{1/2} planes

5^{1/2} planes with 2^{1/4} inches blades are scarcer than wider 5^{1/2} planes.

Pope 5^{1/2} planes are scarce; with the exception of the alloy frog these planes are close copies of Stanley UK and Record planes.



CARTER
NEWS COLUMN
CARTER
No. 5^{1/2} Jack
PLANE



Length 14", cutter 2^{3/8}". A utility size, able to do the work of a Smoother, Jack or Fore plane on many jobs. Just the plane for the tradesman's travelling tool-kit, and for the handyman, too, whose pocket limits his purchase to one plane. Fitted with new type *parallel* lever cap, new type thumb cam with easy leverage, and the large brass adjusting nut.

The back handle is *ridgeless*—perfectly shaped to fit the hand naturally and comfortably. Base and sides of the plane are machine-ground and polished straight and true. A quality Carter tool!

The Hardware Journal Feb.15 1950.





PLANES
FULLY FETTLED (TUNED) AND SHARP
STANLEY BAILEY, BEDROCK & BLOCK PLANES
FETTLING SERVICE, REPAIRS, WELDING
TRADE PRICES ON:

 DMT DIAMOND PLATES - DIA-SHARP PLATES 

 ICE BEAR & KING WATERSTONES
M2 HSS ACADEMY BLADES, LEATHER CHISEL ROLLS AND COVERS

 AGENT
TOOLS FOR WOOD

WOODCRAFT[®] 
Helping You Make Wood Work[®] Rob Cosman Saws & Videos

CREDIT CARD FACILITIES:   

Jim Davey
Ph 02 4447 8822(W) 4447 8790(AH) PO Box 967 Nowra NSW 2541
JDAVEY@bigpond.com www.jimdavey-planes-sharpening.com

Ranting & Raving

A regular page in NEWS

Ranting & Raving is a chance for reader's to express an opinion that may verge on the irrational.

Of course the NEWS editor will not publish any offensive material.

In **Ranting & Raving** number 2 the editor offers his observations on a subject of personal angst.

Sharpening Edge Tools

When I was at school I was shown how to use an oilstone to hone plane blades and chisels. I'm sure my teacher was shown the same technique when he was a youth.

As soon as I could raise the cash I purchased an 8 inch GMF Bench Grinder and learnt how to use the machine correctly. This involved replacing the general purpose wheels with soft relatively coarse Aluminium Oxide wheels. I also purchased my first dressing stick.

Mastering the 8 inch GMF Bench Grinder involved a lot of practice and a few near misses. Apart from one loose wire the machine has run perfectly for forty years.

I did try a few different oilstones. The rule was simple, "best size is 8" x 2". The choice of oilstone was Natural (Washita), Carborundum or Aluminium Oxide. I have always

preferred Aluminium Oxide, in my option a Pike India is unequalled.

Sharpening Mythology

In the early 1980s *Japanese Water Stones* reached the U S of A. Suddenly oilstones were seen as inadequate. Next *Ceramic Stones* and *Diamond Plates* were seen as alternatives for honing edge tools.

I have tried them all but I always come back to my India Oilstones.

The secret to good sharpening is technique. Practice will get results.

Honing Jigs

That said honing jigs are very good and I use my *Eclipse* 36 jig regularly for difficult to hone plane blades and chisels. My German toothing blades, for example, are extra hard and using the jig is a big help. *I have no desire to upgrade to a jig with digital readout.*

Micron Size

So far I've been raving, now comes the ranting!

Razor sharp edges can be achieved with a fine India Oilstone or any other fine honing plate. There is no need to hone through increasingly finer grades of abrasive and finish honing with "super fine microns".

Why Hone edge tools?

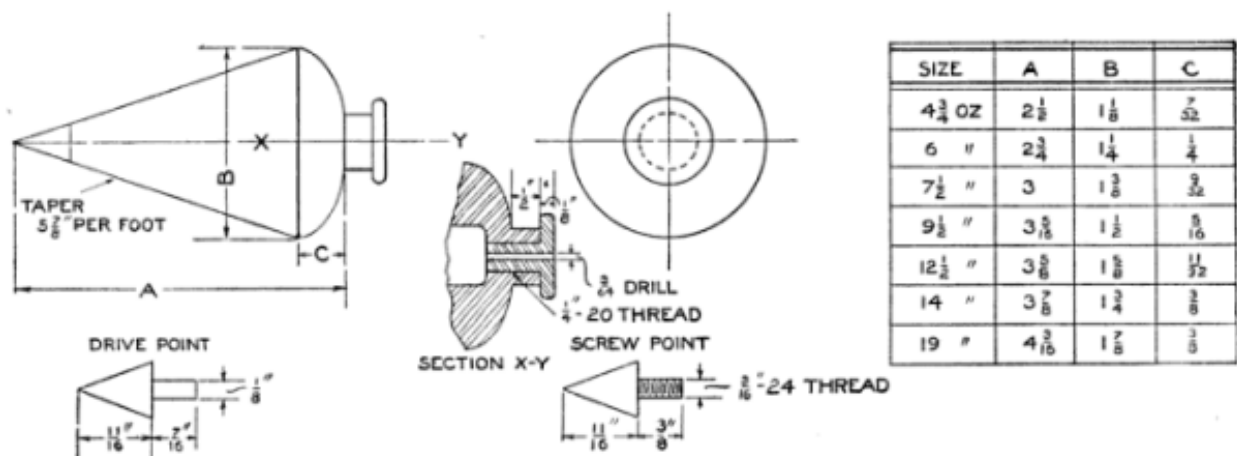
Sharp chisels and plane blades cut cleanly. Wood blunts sharp edges, some in less than two minutes.

The next Sharpening workshop

18 August 2013 Sharpening

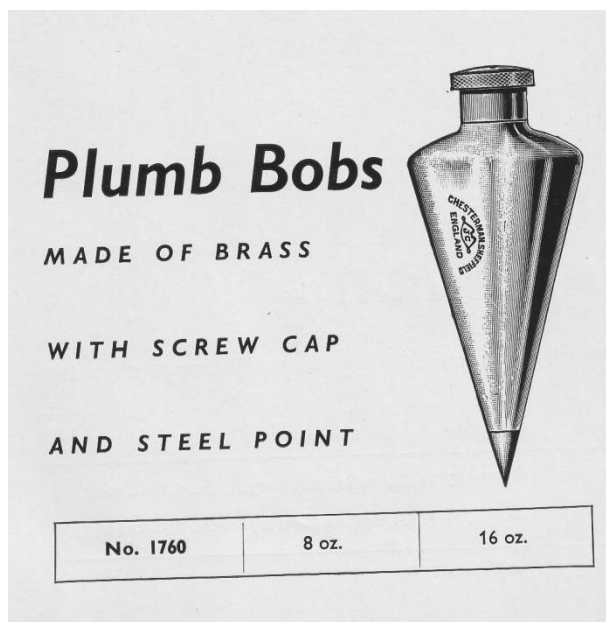
Plumb Bobs

All you need to know!



Drawings, with a List of Dimensions, for Making a Series of Plumb Bobs, Each of Which Has the Right Proportion for Its Size and Weight

Popular Mechanics November 1913



*James Chesterman & Company Ltd
Catalogue No. 103 July 1963*

Plumb Bobs are known in many shapes and sizes. The table from 1913 is probably “standard sizes”.

A Plumb Bob Standard?

By the 1960s the range of Plumb Bob commercially manufactured had been rationalised. Previously Plumb Bobs were made in a large range of sizes and shapes.

Home-made Plumb Bobs were also common. Some were cast in Lead; others were turned from Brass, Wrought Iron or Mild Steel.

The best Plumb Bobs had screw out hardened tips and a screw out knurled keeper for the string line.

The turnip shape was traditional: by the 1960s the stream lined shape of the Chesterman Plumb Bob was the preferred shape.

For such a functional tool Plumb Bobs are known in great variety, both in body shape and weight. “Improved” versions were offered!

In the Tool Collection

TTTG has acquired some fine hand tools and also a few interesting early electrical power tools.

The collection has this **ARCOY** accessory for the **ARCOY** drill.

The **ARCOY DOVETAILER** in the TTTG Collection is complete so if we acquire the **ARCOY** electric drill the device may have test run. The advertisement is from the *Woodworker December 1958*



ARCOY
THE PRECISION
DOVETAILER

PATENT APP
No. 21944/58

DESIGN REGN
APPLIED FOR

For clarity the Cutter Head has been omitted from this photograph.

The ARCOY DOVETAILER, operated by any standard $\frac{1}{4}$ " Electric Drill, is supplied complete with ball bearing Cutter Head and three different sizes of cutter.

With the ARCOY DOVETAILER anyone can cut lap dovetails, in any combination of thicknesses of wood between $\frac{3}{8}$ " and 1" up to 9" in width, in a fraction of the time taken by hand.

From Stockists throughout the Country

£5 . 17 . 6

or direct from the manufacturers and sole distributors
(postage and packing 2/6 extra)

ARCOY PRODUCTS
A. ROBINSON & CO. LTD. KNOWSLEY ROAD, LIVERPOOL 20

Correspondence.

TTTG News Editor has received an enquiry from the Royal Armouries via TATHS Editor Brian Read. TATHS concerns itself mostly with non-power tools but Brian has noted our interest in the history of 20th century power tools and so has passed the enquiry onto us.

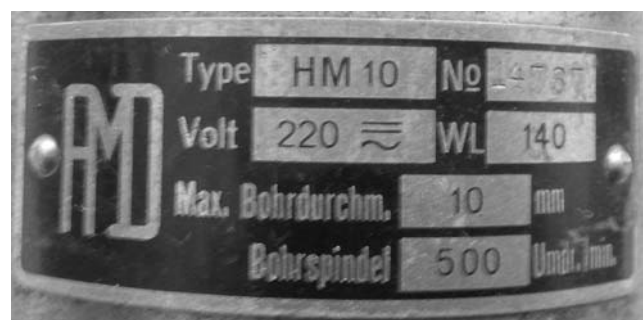
Dear Brian,
I hope you are well.
I've had another enquiry and I was wondering if you could help me or perhaps point me in the direction of someone who could.
I'm not sure if you just deal with woodwork tools, but we've had an offer of a power drill. Please see attached photos.
The story behind the drill relates to it being German dating from approx World War Two, and ideally I'd like to be able to confirm this. The company looks like AMD or RMD if that is useful.
What do you think? Do you know anyone who could help?
Thank you for your time and consideration.
Best wishes,
Kathleen
Kathleen McIlvenna
Curatorial Assistant - Tower Collections

ROYAL ARMOURIES

HM Tower of London

Kathleen included a couple of photographs which we reproduce here in the hope that any of our readers can shed any light on the power drill in question. If anyone has any information on this very early power drill, please contact Bob Crosbie on

bobcrosbie@tttg.org.au



Simonds No-Set Hand Saw

The USA sales promotion for Simonds No-Set Handsaw coincided with the start of the war in Europe in 1914.

Even today the claims for this saw would be seen as over the top.

I've have never used one of these saws so I really cannot comment.

Simonds Mfg. Co. had a reputation for making top quality saws. In fact Simonds and Aitkens were fierce competitors of Disston saws.

Saws of this quality were still in production in the 1950s, by the 1970s the production of quality saws had virtually ended.

There are current makers of replica quality saws. Will saws like the No-Set Blue Ribbon No.51 ever be manufactured again?

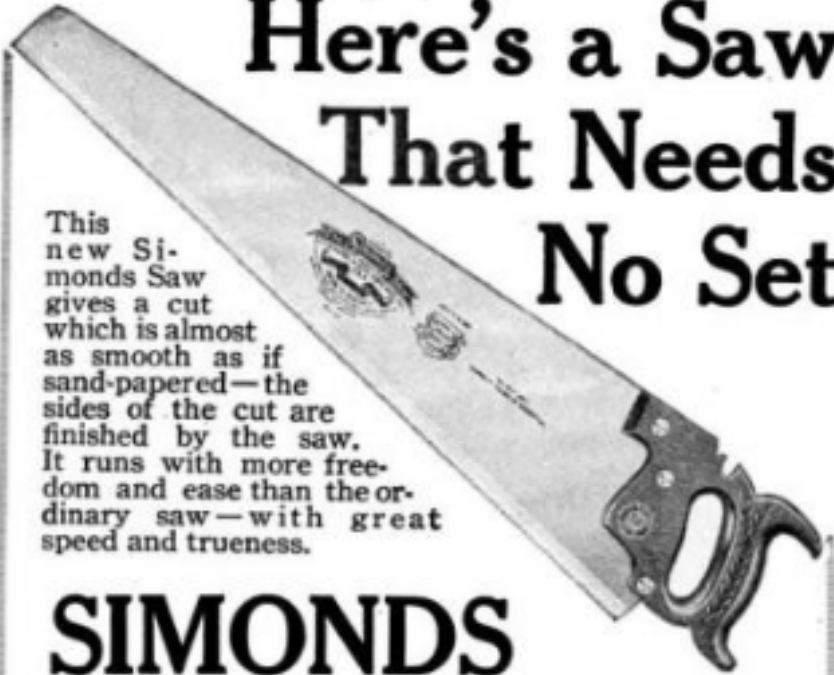
I would like to try one!

Popular Mechanics August 1914

The Disston 120 or "Acme" saw.

A special model made from 1876-1924. It features an ultra-tapered and hardened blade, filing with tall, narrow gullets, and no tooth set. The purpose was to have a saw that could cut so smoothly in furniture-grade dry hardwoods that joints could be assembled with no need for planing.

Here's a Saw That Needs No Set



This new Simonds Saw gives a cut which is almost as smooth as if sand-papered—the sides of the cut are finished by the saw. It runs with more freedom and ease than the ordinary saw—with great speed and trueness.

SIMONDS NO-SET HAND SAW

Blue Ribbon No. 51

Specially ground for finishing almost any kind of work, for quick cutting any kind of dry wood. You need this saw, no matter how many saws you now own.

It is a most beautiful and workmanlike tool, with a Simonds special crucible steel blade, straight back, four brass screws and large hand hole in a carved and polished apple-wood handle. 26-inch—10 points. Price, \$3 each. If your dealer doesn't have it in stock, we will send it charges prepaid on receipt of price.

Simonds Mfg. Co. (Founded 1832) Fitchburg, Mass.

The saw's etch has instructions for its use and maintenance with a special "safe-back" cant file. This is a three-sided file with two 30-40 degree angles. One face of the file was toothed and two were not, hence the "safe-back". This prevented filing of the tooth's back during sharpening. These files are no longer available.

Around the Websites

Tom Marinov

www.ttitt.id.au

www.woodtreks.com

Woodtreks is by Keith Cruikshank (USA) and is a combination travel and Woodwork site.

Keith publishes articles in a video form of techniques, tools and people that he meets. Each item starts with a small travel intro by Keith, each artisan is presented in a nice manner.

Some topics: a custom workbench, Hide glues, Hammer veneers, Fluting, carving and Japanese chisels and more. Unfortunately Japanese saws seem to be present in this site.

The article on workbenches has a collection of profile planes in the rear of the shot that would make a certain member green with envy.

Turning trees into toothpicks is the logo, and whilst it might describe the vast majority of “woodwork” out there, this is not one of them.

Vern has presented an extensive collection of species found in the Central Highlands of Queensland presenting botanical names, pictures and descriptions of each, typical habitat, colour and figure as well as how the timber performs. A turned egg of each is presented. My favourite is “Dead Finish”. He has collected wood from around the world and done an egg of each: all in all 570 eggs!

Other areas of interest on the site are a detailed pictures and descriptions of various projects that he has done and tools.

Longworth chucks are amongst the interesting tools.

Tom Marinov began the first ***Around the Websites*** in News 130 with;
The WWW is a wonderful thing and provides a venue for all sorts of “experts” to express their views on how things were done or should be done, some of it is dubious or wrong.

Whilst TTTG often frowns on such modernity there may be some small gems of wisdom in amongst the clutter. In the absence of a good trade training system we are reduced to learning from wherever we can get the information. The following websites provide some value and are of some credit to the authors.

Around the Websites will appear in future issues of News.

Tom Marinov welcomes your suggestions and comments!

Review

Reviewer: Tom Marinov

The New Traditional

Woodworker: From Tool Set to Skill Set to Mind Set
(Popular Woodworking) Jim Tolpin
ISBN 978-1-4403-0428-6

The back cover starts *“if you are more interested in working with wood rather than machining it”* and continues: *“forget dust masks and ear protection.”*

Tolpin’s book details a transition from a tradesman to a teacher of hand tool woodworking and goes through setting up a nice workshop, benches and accessories that a TTTG member will be very familiar with and use frequently. The language is basic and fairly genuine and Tolpin leads us through a variety of tasks and a conversation on each of the tools used and how. He covers saws, planes, wooden planes, moulding planes, drawshaves etc. Then on to timber selection, though it is an American book it can be translated easily.

The projects he presents are aimed at TTTG style work and there is a hook board, planing boards but no shooting board, a straight edge, and a saw bench pair of stools. The style is plain and easy to follow, with good pictures and well explained.

The author could have used a bit more description of why things were done, and was missing language like “organised labour” and efficiency in work practices, but in general he hits an excellent TTTG note. A quote early in the book “what the machine does by brute force you will be able to do with quiet cunning.”

The quote is from John Brown a Welsh chair maker could be adopted by TTTG as a slogan.

I borrowed mine from the Library, but it is reasonably priced (about\$20) and I recommend it as a TTTG basic item and possibly issued to Schools.

Reviews

The TTTG Editor Wants Your Reviews

Other *NEWS* readers are interested in what you are reading or watching.

The editor keeps up to date with the magazines and reviews old tool items.

However there are too many books being published for one reviewer.

Send your reviews to the editor. Plain word document preferred.

Contributing to TTTG NEWS helps NEWS stay vibrant and interesting and of relevance to each member

It’s not hard, have a bash and see.

PEC Tools

Available from Jim Davey

At the 2013 TTTG Tool Sale the writer purchased a PEC Double Square from Jim Davey. At one of the TTTG Workshops Jim had samples of PEC Squares and the quality of the tools and the good prices were both obvious.

Jim Davey can supply

PEC Tools

Measuring Tools made in USA

Combination Square Sets:
150mm/6", 300mm/12"

Replacement E/M Blades: 150mm,
300mm, 450mm

Double Squares: 100mm, 150mm

Solid Squares

Rules: 150mm, 300mm

Dividers

Digital Calipers

Sliding T-Bevel



Jim Davey will be on the TTTG stand at the Sydney WWW Show and at the Planes Workshops.

Jim sells online

www.jimdavey-planes-sharpening.com

Workshops

4 August **Saw Sharpening**

Filing Handsaws

Setting Handsaws

Repairing Handsaws

18 August **Sharpening**

Chisels and Plane Blade

Blade flattening, Grinding and Honing

Sharpening Techniques

15 September **Planes: Basic**

How planes work

Tuning planes

Planing Techniques

20 October **Planes: Special**

Grooving and Rebating Planes

Circular Planes and Spokeshaves

Planing Devices

3 November **Planes: Advanced**

Bed Rock Planes

Low Angle Block Planes

Repairing Planes

Jim Davey will present a selection of quality tools at the August, September and November workshops.

The Wood River and the "new" Stanley planes are worth considering.

Jim cannot be at the October Workshop

Review

The Pinnacle of Plane Tuning Parts 2 and 3 of a 3 part series

David Charlesworth

*The Pinnacle of Plane Tuning Part 1
Furniture and Cabinetmaking 200
was reviewed in NEWS 130.*

Part 2

Flattening Plane Soles

Furniture and Cabinetmaking 201

This is an excellent discussion of the need to flatten plane soles and an explanation of the techniques used to flatten metal planes. Every reader who aspires to mastery of planes should read this article.

Part 3

The Great Chipbreaker Myth

Furniture and Cabinetmaking 202

Going with American terminology David Charlesworth calls cap irons chipbreakers. Cap iron geometry is explained and several methods of correcting bad cap irons discussed. Again anyone seeking mastery of planes should read this article.

TTTG Planes Workshops

The Pinnacle of Plane Tuning would be hard to beat as a basic guide plane tuning.

Reading this series confirms the editor's belief that the "hands on" TTTG Workshops are among the best plane workshops available.

**The Planes Workshops are on
after the Sydney WWW Show.**

Plane blades and chisels need a flat and polished back.

Chris Cochnour

Fine Wood Working 232 April 2013

*Do the heavy work with sandpaper
glued to granite.*

The techniques in this article are basically the same as those taught at the TTTG workshops. There are of course cheaper and equally good substitutes to granite! Chris hones the final edge with water stones or abrasive paper. I prefer oilstones and don't recommend honing with abrasive paper.

There is another article in this issue on modifying carving tools. The author recommends grinding on the side of a high speed bench grinder wheel. This is extremely dangerous and should not have passed the sub editor's desk!

A Work Holding Renaissance

Christopher Schwartz

Popular Woodworking April 2013

This is a useful review of all the top quality wood holding devices currently being manufactured. The eighteenth century style Gramercy forged holdfasts are tempting but none of the vices come anywhere near my 1950's Record #52^{1/2} A.

For more Gramercy tools go to

www.toolsforworkingwood.com

The TTTG 2014 Tool Sale

The success of the 2013 Tool Sale has encouraged the Committee to conduct another annual Tool Sale in 2014.

When:

Sunday February 23 2014

Where:

The Brickpit Sports Stadium
Dartford Road. Thornleigh

Entry: \$5

The TTTG 2014 Tool Sale offers:

- Exceptional Venue
- Over 40 tables of quality tools
- Onsite Parking
- Close to public transport
- Onsite Café

The 2013 TTTG Tool Sale

The success of the sale was obvious from the numerous times this question was asked;

When is the next Tool Sale?

What is TTTG?

Announcing the 2014 Tool Sale provides an opportunity to consider the reasons why TTTG exists.

The Traditional Tools Group Inc. exists to promote an interest in all types of traditional technology.

TTTG is interested in all trades and all old hand and machine tools.

TTTG is not a collector's group.

TTTG membership is open to anyone willing to pay the fees.

To assist in preserving traditional trade skills TTTG offers "hands on" skills based workshops.

To assist in preserving traditional tools TTTG has a Tool Collection and Technical Library.

TTTG holds regular meetings with presentations on tools and trades.

TTTG holds regular tool auctions and annual tool sales.

TTTG publishes a quality magazine *NEWS* bi-monthly. TTTG publishes reprints of catalogues and leaflets.

Donations to TTTG

TTTG accepts donations of old tools and technical books.
TTTG may also accept donations of old machinery.

Consider the alternatives

The TTTG Committee often hears of cases where someone wants to make sure a relative's tools go to someone who will "look after the tools". Donating tools to TTTG is a way to achieve this aim. The Committee is aware of other alternative ways to donate tools. *If you donate tools to one of the numerous Men's Sheds the tools may not be cared for or used.*



**The newly acquired TTTG 19th century Carpenter's Chest.
(Shown here with a representative selection of tools that it
might have contained).**

**Make sure you don't miss the meeting on June 11th when the
discussion will revolve around this chest and other tool
chests in the TTTG collection**